



# MONTHLY MEMBERSHIP PROGRESS REPORT

District 11 C2

Results as of: 4/30/2016

GMT: THOMAS MATNEY

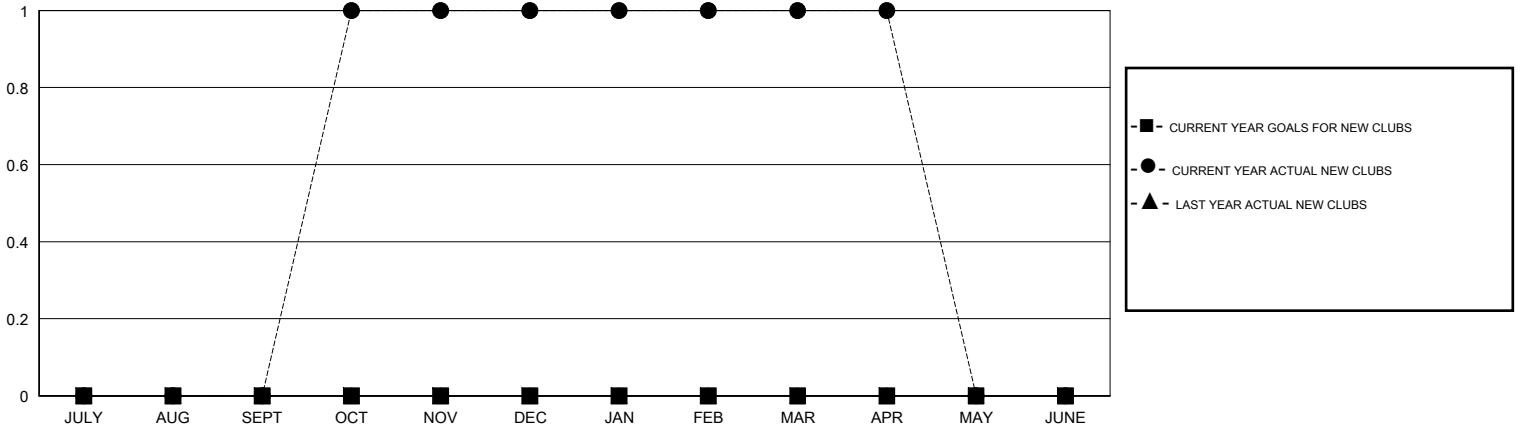
LOCATION MICHIGAN

GMT CA 1

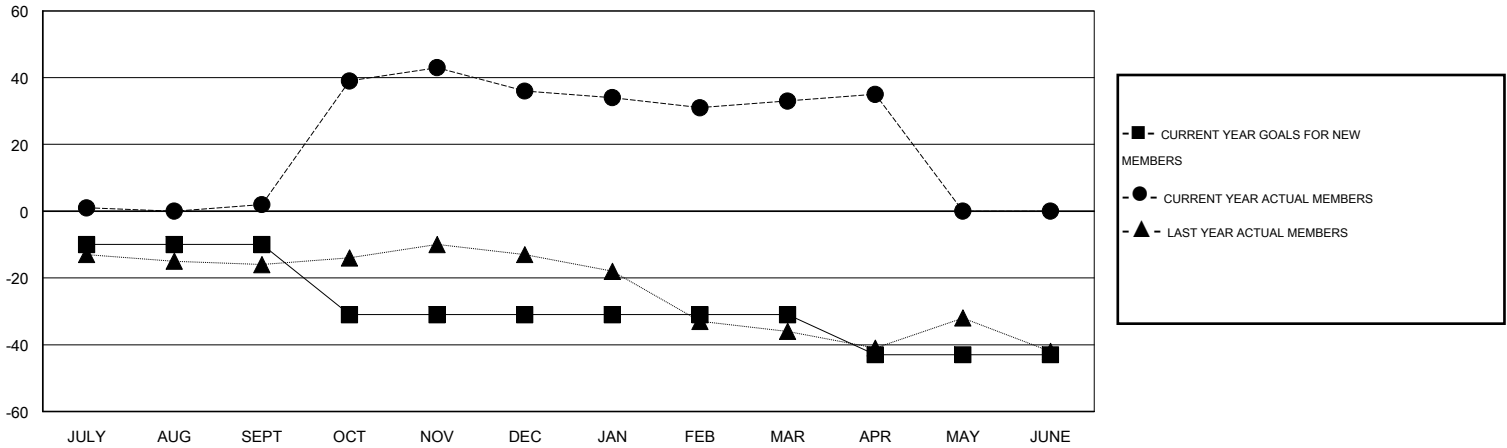
Clubs				
RESULTS FOR 2015-2016				
QUARTER	NEW CLUB GOAL	NEW CLUBS	DROPPED CLUBS	NET GAIN/LOSS
JULY/AUG/SEPT	0	0	0	0
OCT/NOV/DEC	0	1	0	1
JAN/FEB/MAR	0	0	0	0
APR/MAY/JUNE	0	0	0	0

Members				
RESULTS FOR 2015-2016				
QUARTER	NEW MEMBER GOAL	CHARTER AND NEW MEMBERS ADDED	DROPPED MEMBERS	NET GAIN/LOSS
JULY/AUG/SEPT	-10	14	12	2
OCT/NOV/DEC	-21	47	13	34
JAN/FEB/MAR	0	25	28	-3
APR/MAY/JUNE	-12	5	3	2

GOALS AND ACTUAL NEW CLUBS CUMULATIVE



GOALS AND ACTUAL MEMBERS CUMULATIVE



DROPPED CLUBS: 0
------------------

24 CLUBS OF 36 ADDED 1 OR MORE NEW MEMBERS

GENDER DISTRIBUTION	
MALE	656 (73.46%)
FEMALE	237 (26.54%)

DROPPED MEMBERS	
DECEASED	11
CLUB CANCELLED	0
OTHER	45
<b>TOTAL</b>	<b>56</b>

[CLICK HERE FOR HEALTH ASSESSMENT DATA](#)

FAMILY UNIT MEMBERS	151
HEAD OF HOUSEHOLD	74
NON-HEAD OF HOUSEHOLD	77